

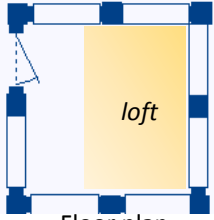


Tiny Log Cabin **Sapling Model** technical information
 Outside dimension 10'x10' 100 sq.ft./9.3 sq. meters (we call this the foot print)
 Inside room dimension 8'8"x8'8" (exterior wall thickness 8")

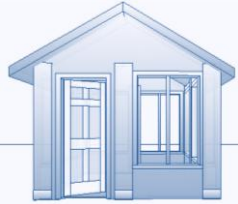


Tiny Log Cabin

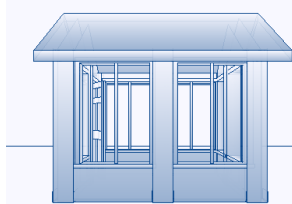
INDUSTRIES



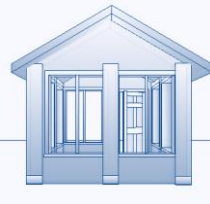
Floor plan



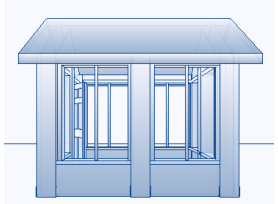
front



right



back



left

Windows and doors can be added or subtracted from any bay at no additional charge. A bay is the wall area between the vertical posts. Bays are 48" wide and 90" tall. The vertical posts are 8" wide and 90" tall. Designate the number of doors including the "swing" and windows size in the shopping cart.

Window Details: Weathershield Brand Visions 2500, Tan, solid vinyl, maintenance free, Energy Star rated. Windows are single slider type where the left side of the window opens sliding to the right.

#3 window-47 7/8" wide/ 29" tall and sits 53" off the floor. Used in kitchens and bathrooms

#5 Window-47 7/8" wide/44" tall and sits 38" off the floor. Used in great rooms and bedrooms

#7 Window-47 7/8" wide/59" tall and sits 23" off the floor. Used in in great rooms and screen rooms

All windows have screens/ insulated glass. Specify in the shopping cart the number/quantity of each

Door Details: Exterior doors are Master craft E214 36"x80" 6 lite (upper window) primed steel pre-hung with lockable hardware. Designate swing: If the handle is on the left as you pull the door toward you it is a "left hang" swing door, if the handle is on the right it is a "right hand" swing door.

Electrical, plumbing and HVAC Details: The Tiny Log Cabin can have any utilities added. The logs are "pre-drilled" for electrical wiring to meet local codes. The cabin can be energized with an extension cord or an electrical service meter. Plumbing can be installed as with any conventionally built structure where piping comes up through the floor. Heat is easiest to install by using electric baseboard heaters. Cool with a window style air conditioner.

Built on an optional wooden cabin floor deck
 See technical details for details



An example of a Tiny Log Cabin-

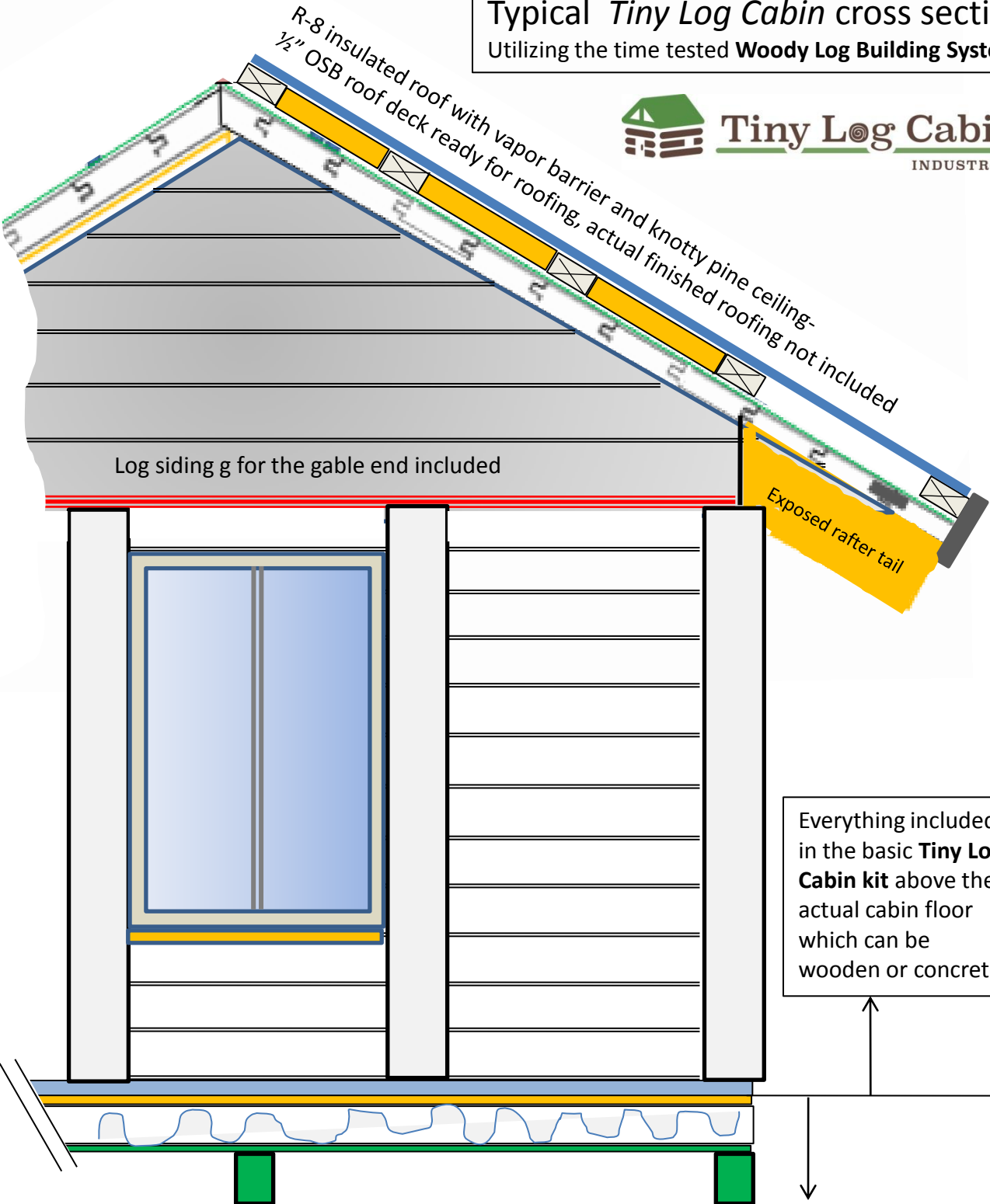
This is a photo of a **Spruce model Tiny Log Cabin** built in Oregon. It has 3-#7 and 1-#3 windows on one side and 4 log bays on the other side. Notice the optional wooden cabin floor deck

Warranty: Woody Manufacturing LLC warrants that all parts are included based on the technical data form and parts will fit as intended. Some trimming or cutting may be required due to the dynamic nature of wood. Woody Manufacturing LLC or affiliated companies disclaim any responsibility for the outcome of the installed product or injuries that may occur during or after installation. Buyer is responsible to ensure that all local and state codes are adhered to and further understands any building or zoning codes are not the responsibility of the suppliers. Safe working conditions are the responsibility of the buyer-Further: Woody Manufacturing LLC does not warrant natural characteristics unique to timber including but not limited to the fact that natural logs and lumber are used in the construction of the Woody log building kit and may have characteristics that include: knots, scars, blemishes, cracks, checks, mineral staining, roughness, undefined moisture content, warps, and twists. We are unable to warrant against such natural tendencies. The buyer also understands that all log buildings require maintenance. Under maintained logs may deteriorate over a period of time if not properly maintained. Woody Manufacturing LLC will replace any defective part of the log kit for up to 60 days following delivery. Some restrictions apply. Building blue prints are sometimes included as part of the Woody log kit package. It is understood that every effort is made to ensure the total accuracy of the blue prints and the buyer understands that some discrepancies may occur between the finished constructed product and the blue prints. General fasteners are not included. Technical assistance 920-390-4999 8am-4pm M-F Central time

Typical *Tiny Log Cabin* cross section
Utilizing the time tested **Woody Log Building System**™



Tiny Log Cabin
INDUSTRIES



Everything included in the basic **Tiny Log Cabin** kit above the actual cabin floor which can be wooden or concrete

Optional wooded cabin floor deck available-see technical data sheet
 3/4" OSB tongue and groove floor deck
 2x6x16" on center treated floor joists
 R-19 floor batt insulation with vapor barrier
 1/2" treated bottom deck cover to keep the critters out
 4x6 treated lumber "skids" that could also be used pier posts

